

Explore the Remote Banggai Archipelago with Dr Angie Brathwaite

A Hosted Wildlife, Conservation & Community Experience With Nomad Archipelago



www.nomadarchipelago.com

HIGHLIGHTS

- **Explore with Purpose** — Journey off the beaten track through the remote Banggai Archipelago, exploring vibrant coral reefs and wild island coastlines while contributing to their protection.
- **Learn Conservation in Action** — Discover how Marine Protected Areas are managed — from daily ranger patrols to coral reef science and community-driven conservation.
- **Meet the People Behind the Protection** — Spend time with local communities whose lives are shaped by the sea, and learn about their role in safeguarding these waters.
- **Build Your Marine Biologist Skills** — Learn to identify coral and fish species, track reef health, and record your sightings like a scientist.
- **Travel with an Expert Guide** — Be hosted by Dr Angie Brathwaite, marine ecologist and Conservation Director of Blue Alliance, bringing insight, experience, and warmth to every step of the journey.
- **Transform Your Travel Choice Into Impact** — Our cruises directly support Blue Alliance's conservation work, helping protect Indonesia's coral reefs for future generations.





Step into the extraordinary world of coral reef conservation with Dr Angie Brathwaite — Marine Ecologist, Coral Reef Expert, and Conservation Director of Blue Alliance Marine Protected Areas.

This is a hosted journey through the Banggai Archipelago like no other, where exploration meets purpose, and discovery supports the protection of one of Indonesia's most fragile marine ecosystems.

13TH – 21ST NOVEMBER 2025 | 8 NIGHTS

10TH – 18TH NOVEMBER 2026 | 8 NIGHTS

\$4 250 PER PERSON SHARING*

DEPARTURE AND ARRIVAL PORT: LUWUK, INDONESIA

**Single in own cabin \$6375*



EXPLORE. LEARN. CONTRIBUTE THE SLOW TRAVEL WAY

Guided by Angie, you'll explore the vibrant coral reefs, islands and beaches of the Banggai Archipelago while gaining rare insight into the conservation work of Blue Alliance — the organisation co-managing a network of Marine Protected Areas (MPAs) across these remote waters, and recipient of all Nomad Archipelago's proceeds.

Throughout your journey, you'll take part in a series of hands-on experiences that connect you with the reef, the science that safeguards it, and the communities whose lives are shaped by it.

In between hands-on conservation activities, there's time to simply explore. Snorkel vibrant coral gardens, swim in clear tropical shallows, and wander the remote islands and beaches of the Banggai Archipelago — places few travellers ever reach.

*This is conservation, the slow travel way, unhurried,
immersive, and deeply connected to place.*

SCIENCE & CONSERVATION

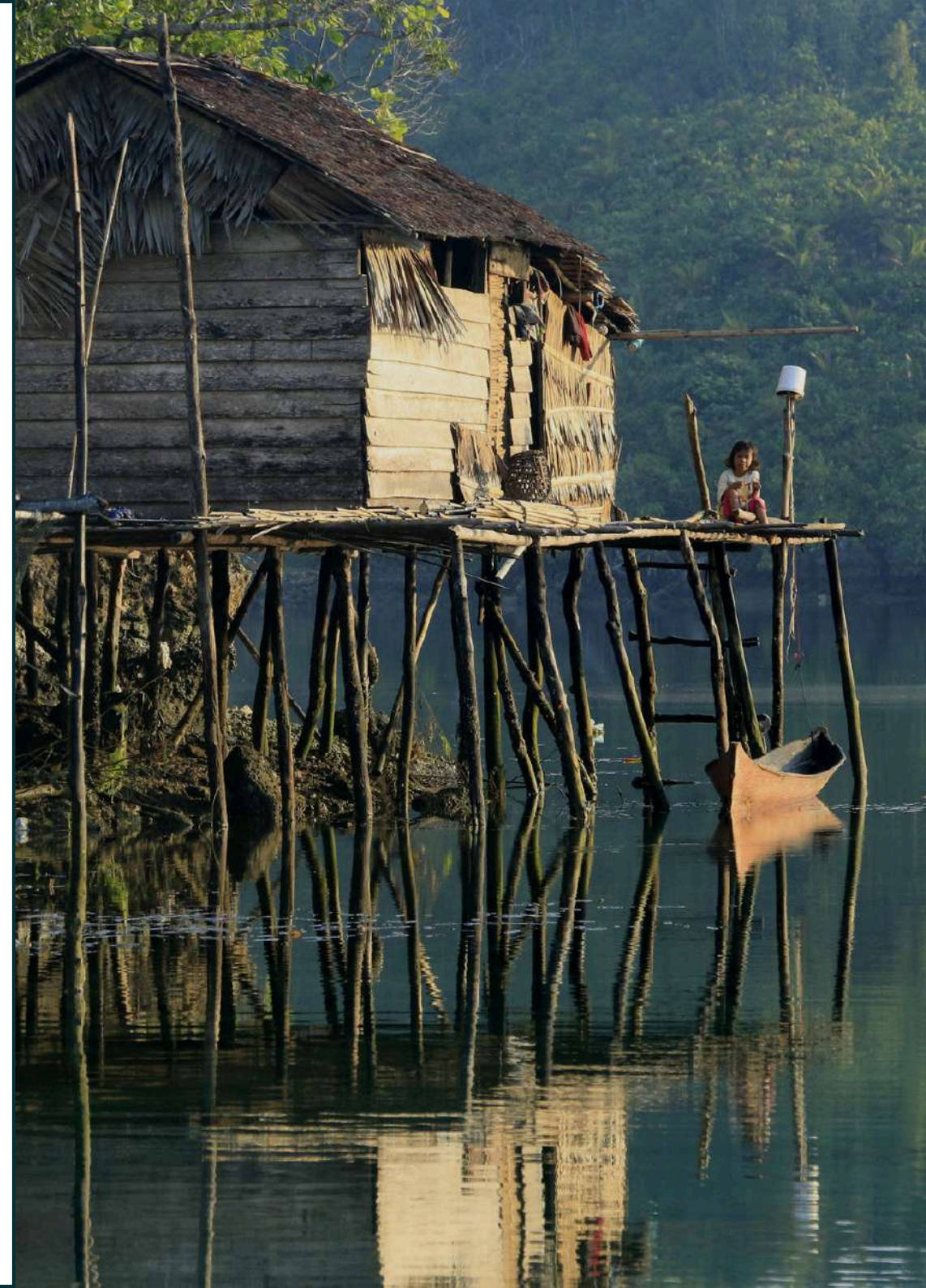
Take part in guided reef explorations, fish surveys, and map coral habitats using traditional manta tow methods. Learn how scientists track the health of coral ecosystems over time — and contribute your observations to real research efforts.

COMMUNITY

Spend time alongside local coastal communities who are actively involved in reef conservation. Learn about their relationship with the ocean, sustainable fishing practices, and their role in the co-management of the MPAs.

PATROLLING

Gain an understanding of how Blue Alliance supports local rangers & why these waters need protecting. It's a glimpse into the real work of conservation — a balance of education, community engagement, and quiet vigilance on the water.





EXPLORING BY SNORKELING

We'll be exploring and monitoring the reefs by snorkelling — where, at depths of less than four metres, the reef is at its most diverse and vibrant. Snorkelling also makes it easier to pause, communicate, and share what we're seeing — turning each exploration into a more interactive and connected experience.

WHAT YOU'LL TAKE AWAY

Leave with memories of a truly unique adventure in one of Indonesia's last wild island archipelagos. Along the way, gain a deeper understanding of coral reef ecosystems, marine biodiversity, and the vital role Marine Protected Areas play in protecting them.

With new skills in coral and fish identification — just like a marine biologist — guests will also gain first-hand knowledge of what's involved in managing these fragile environments, from daily ranger patrols to hands-on scientific surveys.

MARINE BIOLOGIST TOOLKIT

Every guest will receive a specially designed marine ecologist's toolkit to support their experience and learning:

- A personal eco-journal to document your discoveries and deepen your knowledge
- A selection of resources such as dive slates & species identification cards for recording sightings above and below water
- Reef Support Crew merchandise





YOUR IMPACT

As part of this hosted eco-friendly cruise, guests will directly support Blue Alliance's conservation efforts — contributing data and observations to ongoing scientific programs.

All profits from our cruises fund the co-managed Marine Protected Areas in the Banggai, supporting habitat restoration, sustainable fisheries, and community-led conservation.

This is slow travel with genuine impact — helping protect an ecosystem in crisis while connecting deeply with the people and places working to save it.



YOUR HOST

Dr Angie Brathwaite is a marine ecologist with over 25 years of global experience in coral reef science, marine conservation, and integrated coastal management. She is the Director of Conservation & Science and Co-Founder of Blue Alliance MPAs.

Angie has managed coral reef systems from the Caribbean to the Coral Triangle, headed the Marine Research Section for the Government of Barbados, and holds a PhD in Marine Biology from Paris Sciences et Lettres (PSL) Research University.

She is a passionate biologist, TED Talk presenter, PADI Staff Instructor, and brings a wealth of knowledge, curiosity, and warmth to every journey she leads.





ABOUT THE BANGGAI

The Banggai Archipelago is a true frontier—a remote chain of over 100 islands adrift between Central Sulawesi and the Molucca Sea. Far from the well-trodden paths of Indonesian tourism, this is a place where the modern world feels distant, where the only boats you'll see belong to local fishermen, and where each day unfolds in quiet seclusion.

Here, time slows to the rhythm of the tides. White sand beaches stretch untouched, fringed by lush green islands rising from turquoise waters — Stilted Bajau villages stand above the shallows, home to sea nomads who have spent generations living in harmony with the ocean.

Beneath the surface, vibrant coral gardens teem with marine life, including the striking Banggai cardinalfish, found only in these waters.

Scattered throughout the archipelago, hidden lagoons shelter a rich ecosystem of mangroves, corals, and seagrass beds—the feeding grounds of elusive dugongs.

These quiet waterways, shaped by nature over centuries, are a sanctuary for both marine life and those who seek adventure off the beaten path.

ABOUT BLUE ALLIANCE MARINE PROTECTED AREAS

Blue Alliance Indonesia leads marine conservation efforts in the Banggai Archipelago, one of Indonesia's most ecologically important yet vulnerable marine regions. Working in close partnership with local communities and government, their field teams operate year-round to manage and protect the Banggai Marine Protected Area (MPA) Network—covering nearly 900,000 hectares of coral reefs, mangroves, and seagrass meadows.

Their core operations focus on science-based MPA management, habitat restoration, and community-led enforcement. Blue Alliance field staff monitor key species, support sustainable fisheries, and deliver training and resources that empower local communities to take a leading role in protecting their marine environment.

Their efforts have helped stabilise vulnerable habitats and safeguard rare species like the Banggai cardinalfish, endangered Napoleon wrasse, and several species of sharks and turtles.

The impact is both ecological and social—restoring biodiversity while strengthening local livelihoods and food security in an area where most families depend on the sea.





ABOUT NOMAD ARCHIPELAGO

*Nomad Archipelago was founded with a simple idea
—to explore Indonesia differently.*

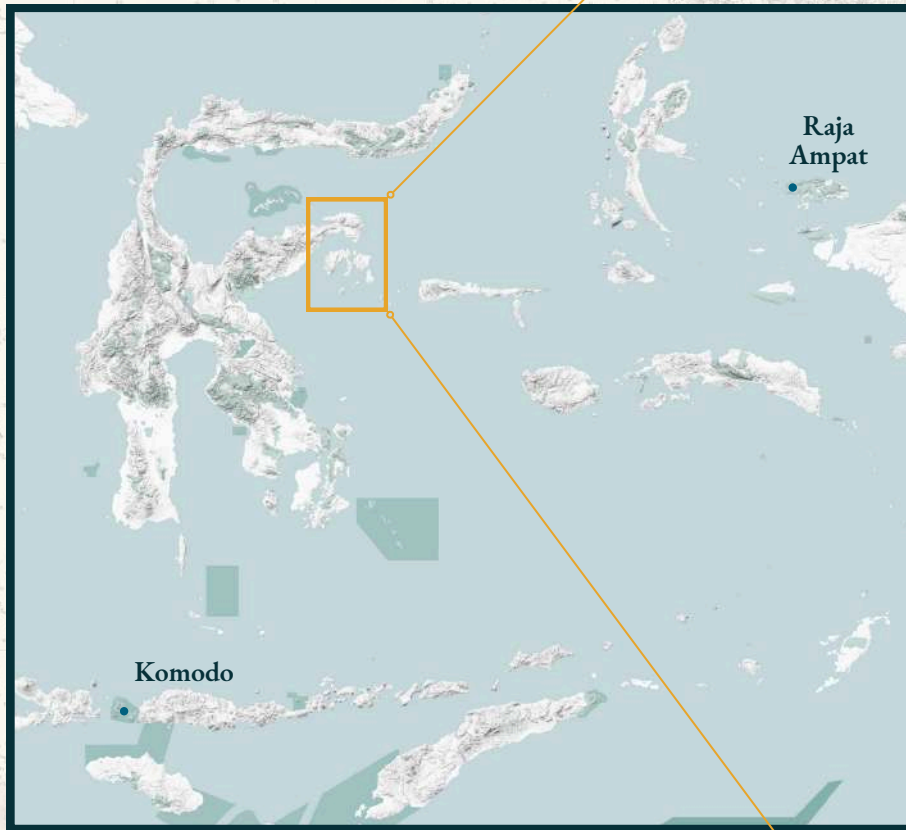
Launched in 2020 by a team with decades of experience sailing these waters, Nomad grew from a deep love for the ocean and a belief that travel should be both respectful and responsible. For us, exploring this remarkable country without care for its communities and ecosystems is not an option.

Our eco-friendly liveaboards are designed for low-impact cruising. From reduced emissions to considered materials, every detail is shaped by a commitment to sustainability.

Nomad Archipelago is a social enterprise and partnership between Nomad Plastic and Blue Alliance Marine Protected Areas — A proudly reef positive business where 100% of proceeds go directly to the Marine Protected Areas co-managed by Blue Alliance in the Banggai region of Indonesia.



THE JOURNEY



While we set a basic itinerary, the journey remains flexible to engage more deeply with the places, people, and moments that matter most.



INCLUDES

- ✓ Expert host & guide
- ✓ Hands-on insight of Banggai's communities, biodiversity & Marine Protected areas
- ✓ Marine Biologists Toolkit
- ✓ 8 Nights' accommodation aboard the Bajau
- ✓ All meals on board
- ✓ Water, Tea, Coffee & Soft drinks
- ✓ Land excursions
- ✓ Transfers between Luwuk airport or hotel and port arrival and departure point
- ✓ Multilingual on board (English & Indonesian)
- ✓ Stand-up paddle board, Kayaks, Yoga Mats & Snorkeling gear

EXCLUDES

- ✗ Harbor and Park fees
- ✗ Alcoholic Beverages
- ✗ Travel Insurance
- ✗ Diving Insurance
- ✗ Onboard or local purchases
- ✗ Fuel surcharge (if any)
- ✗ Crew and Cruise Director gratuities
- ✗ Pick up from / to outlying hotels
- ✗ Domestic flights





BOOK NOW



nomadarchipelago.com



hello@nomadarchipelago.com



+62 821 4736 8360

CONNECT



[@nomadarchipelago.com](https://www.linkedin.com/company/nomadarchipelago)



[@nomadarchipelago.com](https://www.facebook.com/nomadarchipelago)



[@nomadarchipelago.com](https://www.instagram.com/nomadarchipelago)